



CONVEYOR ROLLER MANUFACTURER

www.jdj-polska.eu



JDJ Sp. z o.o. is a company that has developed a strong brand in many industry sectors since its' creation over the past 30 years.

As a Polish leader in the production of belt conveyors spareparts. We set new trends while maintaining the best, proven solutions. Our products are manufactured in accordance with the main European standards DIN 15207-1, PNE 53300 and NFE 53301, as well as with the American CEMA and Eastern, post Soviet Union GOST standards.

Our products are intended for power plants, cement plants, gravel pits, sorting plants, airports, construction companies, recycling centers, underground mines, surface mines, port areas, the food industry, tunneling and many others around the world.

In our Offer you will find:

- Smooth rollers (light and heavy duty).
- Disc return rollers.
- Impact rollers.
- Guide rollers.
- Support rollers.
- Roller frames.
- Pulleys (return and drive).
- Equipment for conveyors (chains, brakes etc.).

The Strategy of the company development is oriented on fulfilment of our Customers on the one side and on the other on constant development and improving processes in production and management.

The implementation of the **Quality Policy** is possible thanks to:

- all employees deep job involvement,
- frequent schooling in order to improve the qualifications of our team,
- suppliers of raw materials carefully chosen on the basis of their ability to supply materials according to the particular standards and cooperation satisfying both parties,
- since 2013 our activity has been confirmed by the certificate PN-EN ISO 9001: 2008 of TUV Poland.

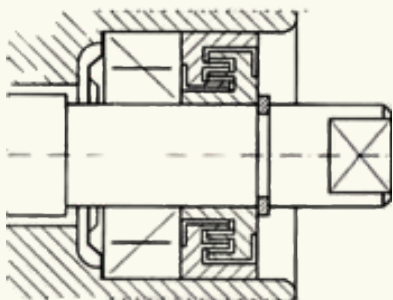
Our Vision

Stay ahead and work on the evolving needs of our Partners and Customers according to their needs by improving our Team, production processes and technology.

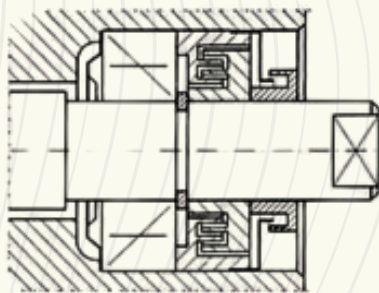
Our Values

- Integrity - we believe that the mutual relations between our Partners, Customers and our Employees should always be open, fair, and honest.
- Attendance - we guarantee our Partners and Customers an individual approach and the best products quality.
- Innovation - we encourage you to think beyonde the contractual framework.
- Team work- we work together to achieve optimal results.

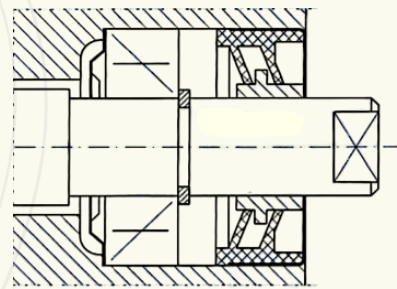
THE LABYRINTH SEALING SYSTEM



S

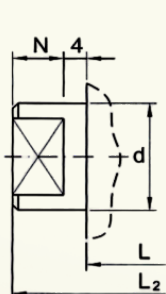


N

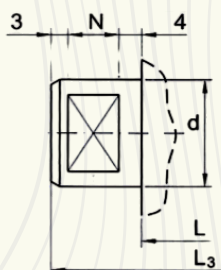
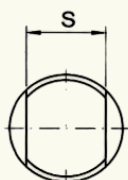


F

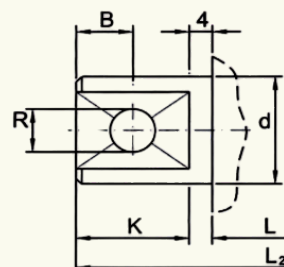
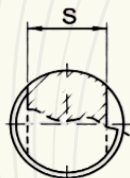
THE SHAFT SPINDLE TYPE



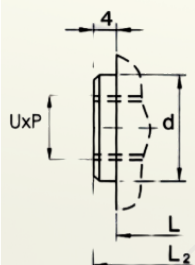
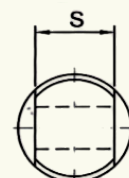
A



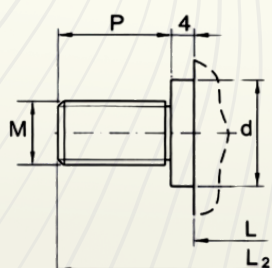
B



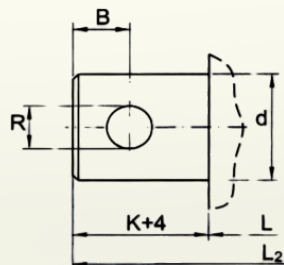
C



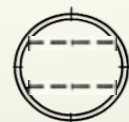
D



E



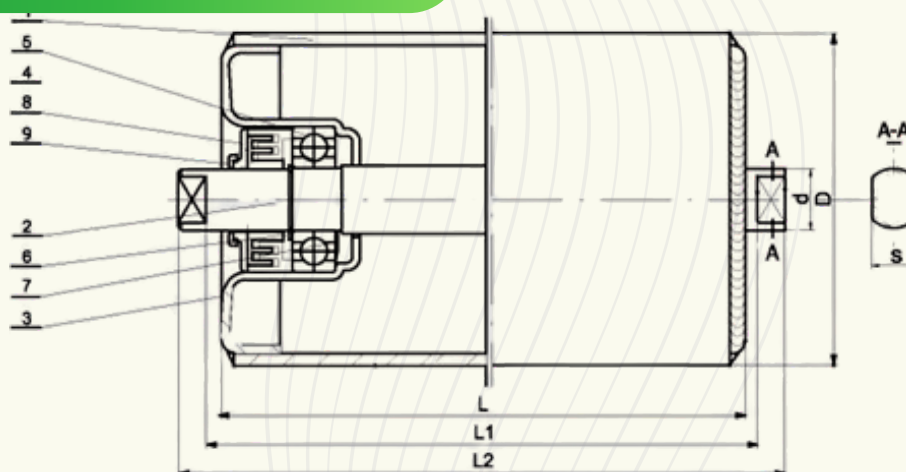
H



Bearing / Lager / Roulement / Подшипник / Łożysko	Ø Tube / Rohr / Tube / Труба / Rura
6204	Ø 51 – Ø 133
6205	Ø 63,5 – Ø 159
6206	Ø 70 – Ø 159
6305	Ø 70 – Ø 159
6306	Ø 88,9 – Ø 159
6307	Ø 108 – Ø 159
6308	Ø 108 – Ø 193,7
6310	Ø 133 – Ø 215
6312	Ø 159 – Ø 193,7
6314	Ø 168 – Ø 215
22308	Ø 108 – Ø 193,7
22310	Ø 133 – Ø 215
22312	Ø 159 – Ø 250
22314	Ø 168 – Ø 250



STEEL SMOOTH ROLLER



1. tube
2. shaft
3. bearing hub
4. labyrinth sealing
5. bearing
6. Seger ring
7. sealing plate
8. cover cap
9. dust cup & splash protection

SHAFT Ø 20

L (mm)	L1 (mm)	L2 (mm)	N (mm)	S (mm)	Bearing / Lager / Roulement / Подшипник / Łożysko	Weight / Gewicht / Poids / Bec / Waga (kg)				
						Ø 63.5	Ø 76	Ø 89	Ø 108	Ø 133
160	168	186	9	14	6204 C3	2,2	2,3	2,4	2,9	4,0
200	208	226				2,6	2,7	2,8	3,4	4,6
250	258	276				2,9	3,1	3,2	4,1	5,4
300	308	326				3,3	3,5	3,7	4,8	6,2
315	323	341				3,4	3,6	3,8	5,0	6,4
380	388	406				3,9	4,2	4,4	5,5	7,4
465	473	491				4,6	4,9	5,1	6,9	8,7
530	538	556				5,1	5,5	5,8	7,8	9,8
600	608	626				5,6	6,0	6,4	8,7	10,8
670	678	696				6,1	6,6	7,1	9,7	11,9
700	708	726	6,4			7,0	7,5	10,2	12,4	
750	758	788	15			6,8	7,4	8,0	10,9	13,2
800	808	838				7,2	7,8	8,4	11,6	14,0
900	908	938				8,0	8,7	9,3	12,8	15,6
950	958	988				8,4	9,2	9,9	13,5	16,4
1000	1008	1038				8,8	9,7	10,4	14,2	17,2
1050	1058	1088				9,3	10,3	11,2	15,0	18,1
1150	1158	1188				10,0	10,9	11,7	16,2	19,5
1250	1258	1288				10,8	11,7	12,6	17,5	21,1
1400	1408	1438				11,8	12,9	14,0	19,5	23,5
1600	1608	1638				13,4	14,7	16,0	22,1	26,6
1800	1808	1838	15,0			16,5	18,0	24,8	29,7	

STEEL SMOOTH ROLLER

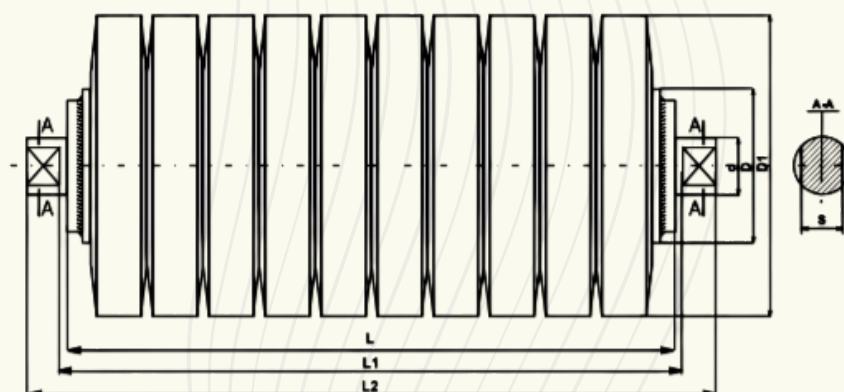
SHAFT Ø 25

L (mm)	L1 (mm)	L2 (mm)	N (mm)	S (mm)	Bearing / Lager / Roulement / Подшипник / Łożysko	Weight / Gewicht / Poids / Вес / Waga (kg)		
						Ø 108	Ø 133	Ø 159
250	258	282	12	18	6305 C3	4,1	6,3	7,1
315	323	347				5,0	7,4	8,5
380	388	412				5,5	8,6	9,8
465	473	497				6,9	10,1	11,5
530	538	562				7,8	11,2	12,8
600	608	632				8,7	12,4	14,2
670	678	702				9,7	13,7	15,6
700	708	732				10,2	14,2	16,2
750	758	798	10,9			15,2	17,2	
800	808	848	20;22			11,6	16,0	18,2
900	908	948				12,8	17,8	20,2
950	958	998				13,5	18,7	21,3
1000	1008	1048				14,2	19,6	22,2
1050	1058	1098				15,0	20,6	24,3
1150	1158	1198				16,2	22,2	25,2
1250	1258	1298				17,5	23,9	27,3
1400	1408	1448				19,5	26,6	30,4
1600	1608	1648				22,1	30,1	34,4
1800	1808	1848				24,8	33,6	38,4

SHAFT Ø 30

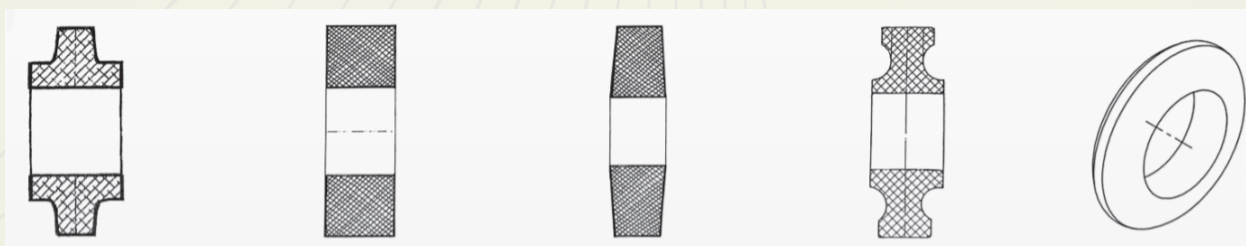
L (mm)	L1 (mm)	L2 (mm)	N (mm)	S (mm)	Bearing / Lager / Roulement / Подшипник / Łożysko	Weight / Gewicht / Poids / Bec / Waga (kg)		
						Ø 108	Ø 133	Ø 159
250	258	282	12	22	6206 C3	5,0	6,3	7,6
315	323	347				6,2	7,6	9,0
380	388	412				7,0	8,9	10,4
465	473	497				8,6	10,4	12,2
530	538	562				9,7	11,7	13,6
600	608	632				11,1	13,2	15,1
670	678	702				12,2	14,4	16,6
700	708	732				12,9	15,1	17,3
750	758	798	20			13,7	16,0	18,4
800	808	848				14,6	17,0	19,5
900	908	948				16,1	18,9	21,6
950	958	998				16,9	19,8	22,8
1000	1008	1048				17,8	20,8	23,8
1050	1058	1098				19,0	22,1	26,0
1150	1158	1198				20,3	23,6	27,0
1250	1258	1298				21,8	25,4	29,2
1400	1408	1448				24,3	28,3	32,5
1600	1608	1648				27,7	32,2	36,8
1800	1808	1848		31,1	36,0	41,1		

IMPACT ROLLER



D1	D	d	S	Bearing / Lager / Roulement / Подшипник / Łożysko
89	51 - 63,5	20	14	6204C3; 6205C3
108	51; 63,5; 70; 76	20; 25; 30;	14; 18; 22	6204C3; 6205C3; 6305C3; 6206C3
133	63,5; 70; 76; 89	20; 25; 30;	14; 18; 22	6204C3; 6205C3; 6305C3; 6206C3; 6306C3
140	76	20; 25; 30;	14; 18; 22	6204-6307C3
159	70; 76; 89; 108	25; 30; 40;	18; 22; 34	6305-6307C3; 6308C3; 22308C3
190	108; 133	40; 50	Acc. to customer requirements	6308C3; 6310C3; 6312C3; 22308C3; 22310C3; 22312C3
215	133; 159	40; 50; 60	Acc. to customer requirements	6308C3; 6310C3; 6312C3; 22308C3; 22310C3; 22312C3

DISC SHAPES



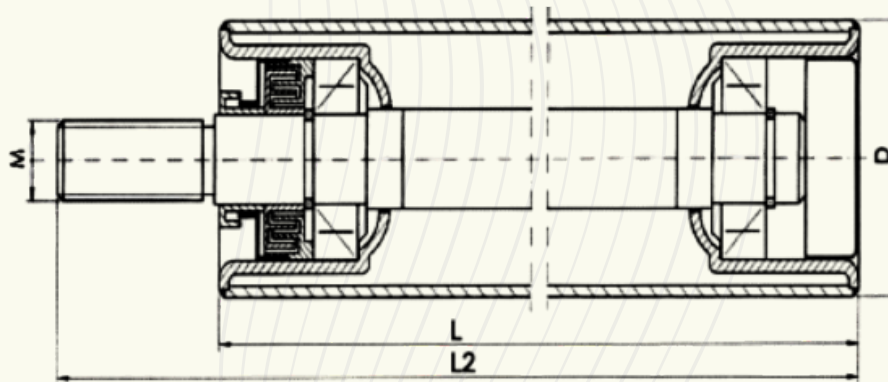
ANTISTATIC

RUBBER

PU

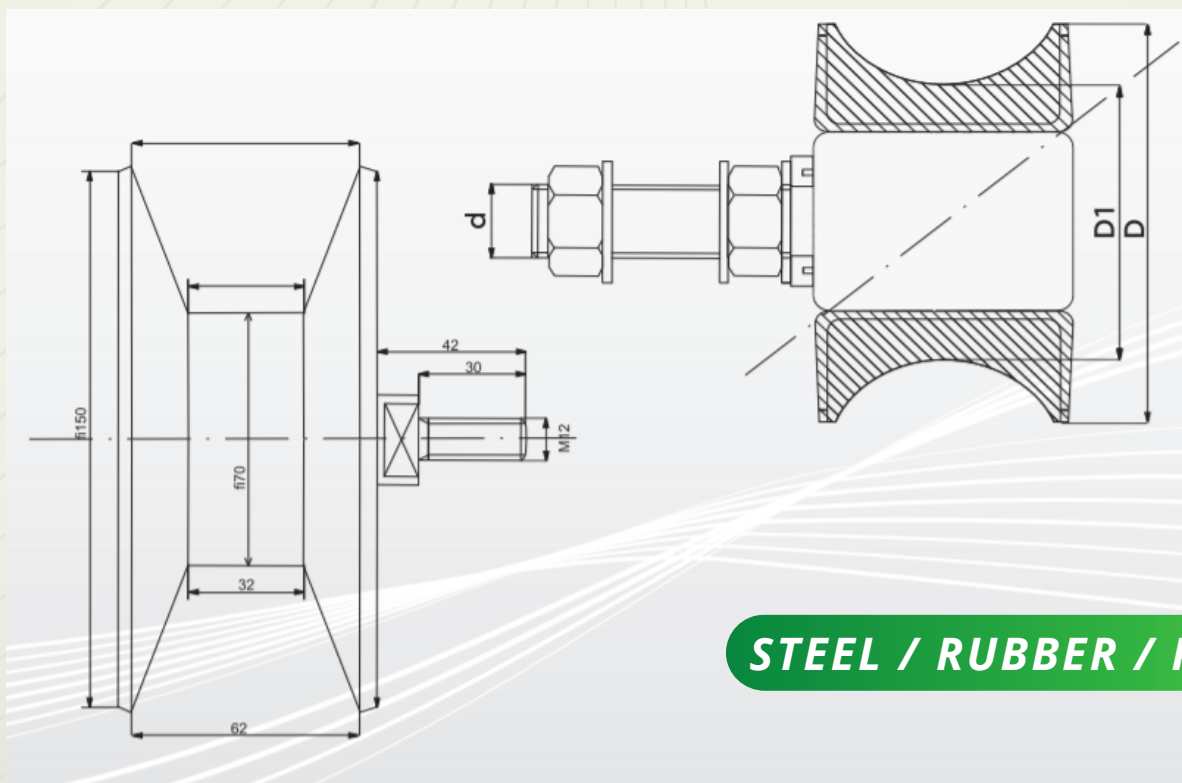
OTHER

GUIDE ROLLER



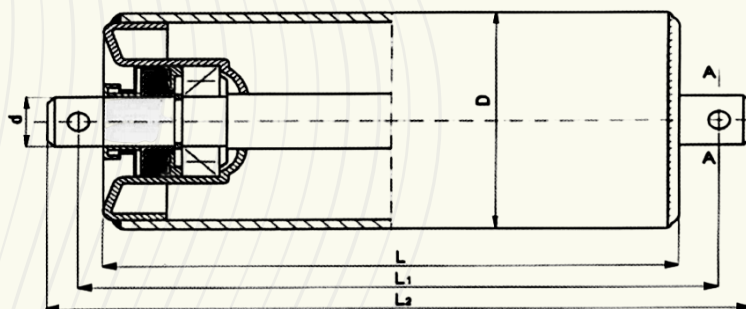
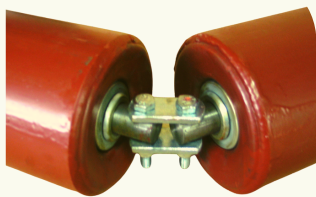
L (mm)	L2 (mm)	D (mm)	D (mm)	Bearing / Lager / Roulement / Подшипник / Łożysko	Thread / Gewinde / Filetage / Резьба / Gwint
100	150	51; 63,5; 70; 76; 89; 108; 133	20 25 30	6204C3 6205C3 6305C3 6206C3	M8
150	200				M10
215	265				M12 M16 M20 M24

U-SHAPED LINE ROLLER



STEEL / RUBBER / PU

GARLAND ROLLER



SHAFT Ø 20

L (mm)	L1 (mm)	L2 (mm)	S (mm)	R (mm)
160	190	206	15	6
200	230	246		
250	280	296		
315	345	361		
380	410	426		
465	495	511		
530	560	576		
600	630	646		
700	730	746		
750	780	796		

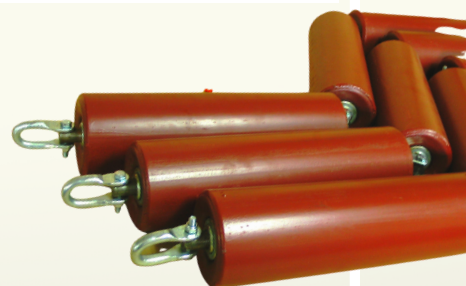
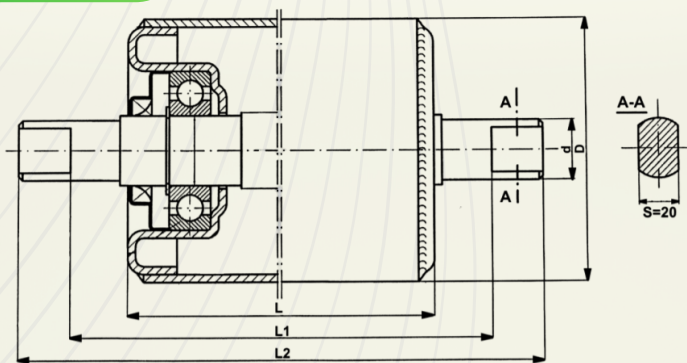
SHAFT

Ø 25

Ø 30

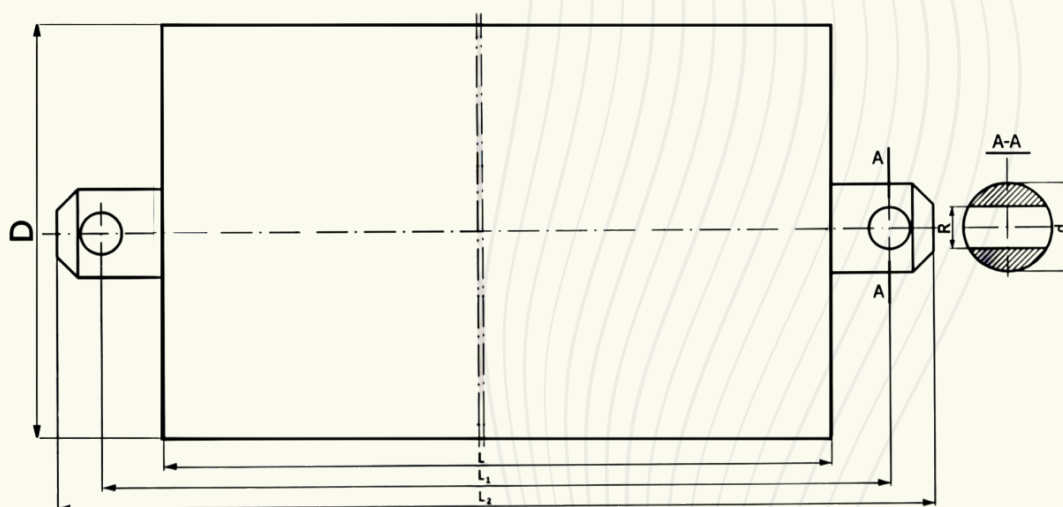
L (mm)	L1 (mm)	L2 (mm)	S (mm)	R (mm)	S (mm)	R (mm)
315	365	389	20	8,5	25	10,5
380	430	454				
465	515	539				
530	580	604				
600	650	674				
670	720	744				
700	750	774				
750	800	824				

SNUB ROLLER



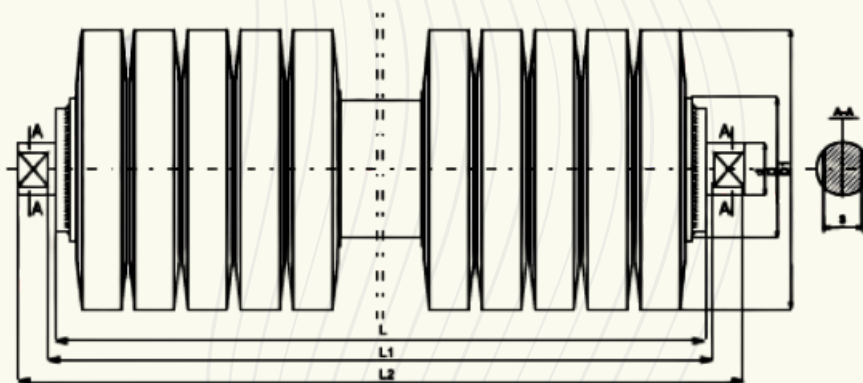
L (mm)	L1 (mm)	L2 (mm)	D (mm)	D (mm)	S (mm)	Bearing / Lager / Roulement / Подшипник / Łożysko
700	712	764	133 159	35	20	6307C3
850	908	960				
950	1008	1060				
1050	1064	1116				
1150	1208	1260				
1400	1458	1510				

HEAVY DUTY ROLLER



D (mm)	Wall thickness / Wandstärke / Épaisseur du tube / Толщина обечайки / Grubość ścianki	L (mm)	Bearing / Lager / Roulement / Подшипник / Łożysko
159	5,0	600	6308
159	6,7	850	6308
159	6,7	530	6308
159	7,1	850	6308
168,3	6,3	670	6310
168,3	7,1	670	6310
193,7	6,3	800	6312
193,7	7,1	670	6312
193,7	7,1	750	6312
193,7	12,5	450	6312
193,7	14,2	315	6312
193,7	12,5	360	22312
193,7	16,0	340	22312

DICS RETURN ROLLER



D Ø51 , 63.5, 70, 76 mm

Ø Disc / Stützringe / Bague / Диска / Tarczy D1	Ø 89 D	Ø 108 D	Ø 133 D
L(mm)	qT/qt-lt*	qT/qt-lt*	qT/qt-lt*
465	10/5-40	8/3-65	
500	10/5-40	8/3-65	
530	11/6-40	8/3-75	8/3-75
600	14/5-40	10/3-75	10/3-75
670	15/6-40	10/3-95	10/3-95
700	16/7-40	11/4-75	11/4-75
750	17/8-40	11/4-95	11/4-95
900	19/10-40	12/5-95	12/5-95
950	20/11-40	12/5-95	12/5-95
1000	20/11-40	14/5-95	14/5-95
1100	22/13-40	15/6-95	15/6-95
1150	23/14-40	15/6-105	15/6-105
1250	24/15-40	16/7-95	16/7-95
1400	27/18-40	17/8-95	17/8-95
1600	30/21-40	18/9-105	18/9-105
1800	33/24-40	20/11-95	20/11-95

qT – disc quantity / Stützringemenge / quantité de bague / количество дисков / ilość tarcz

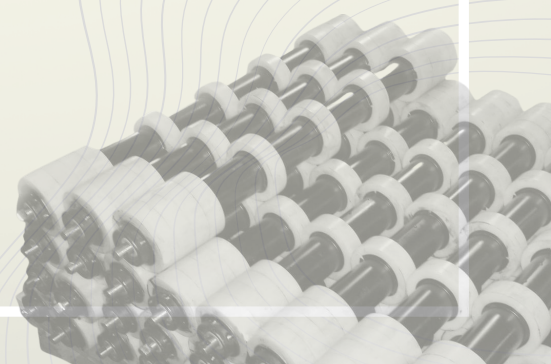
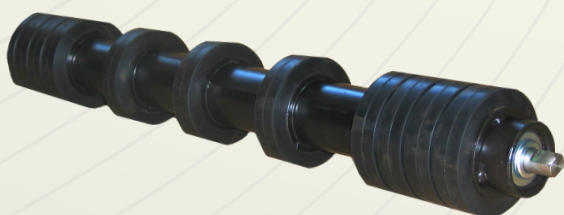
qt – distance sleeve quantity / Distanzhülsenmenge / distance manchon quantité / кол-во распорных втулок / ilość tulejek

lt - distance sleeve length / Abstand Ärmellänge / distance longueur de manche / длина распорных втулок / długość tulejek

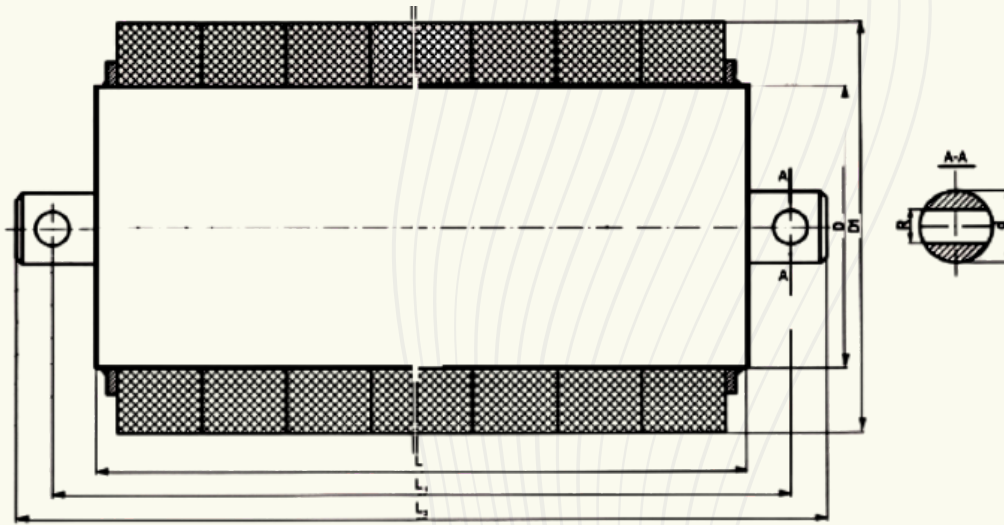
Ø Disc / Stützringe / Bague / Диска / Tarczy D1	D	Steel lt*	PCV lt*
89	51; 63,5		
108	63,5; 70; 76		
133	63,5; 70; 76; 88,9		
159	63,5; 70; 76; 88,9; 108		
190	108; 133		
215	133		
		75 95 105 115	on request / auf Anfrage / sur demande / согласно запросу / dowolna długość

RUBBER

PU



HEAVY DUTY IMPACT ROLLER



Ø Disc / Stützringe / Bague / Диска / Tarczy D1 (mm)	D (mm)	Wall thickness / Wandstärke / Épaisseur du tube / Толщина обечайки / Grubość ścianki (mm)	L (mm)	Bearing / Lager / Roulement / Подшипник / Łożysko
184	108 / 105	7,1	1000	6308C3
194	108	5,6	900	6308C3
194	108	5,6	1050	6308C3; 22308C3
194	108	5,6	1150	6308C3; 22308C3
190	108	4,0	750	6308C3
215	133	4,0	530	6308C3; 6310C3; 22308C3; 22310C3

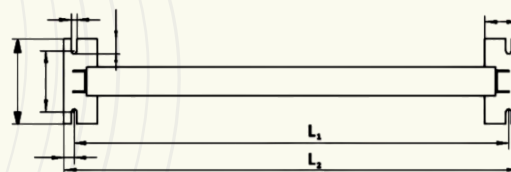
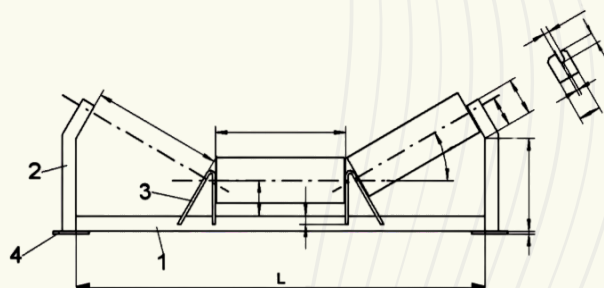
RUBBER

PU

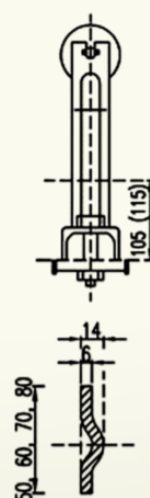
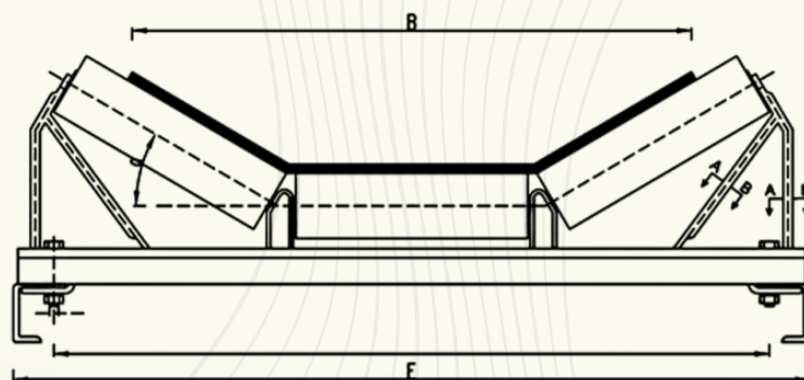
OTHER



ROLLER STATIONS



No.	Name	Quantity (pcs.)
4	Flat Steel / Płaskownik	2
3	Flat Steel / Płaskownik	2
2	U - iron / Ceownik	2
1	Angle bar / Kątownik	1



Bt (mm)	D (mm)	L	F	H	a°
400	89; 108	160	700	105; 150	10°, 20°, 30°
500	89; 108	200	800	105; 150	10°, 20°, 30°
650	89; 108; 133	250	950	105; 150	10°, 20°, 30°
800	89; 108; 133; 159	315	1150	105; 150	10°, 20°, 30°
1000	89; 108; 133; 159	380	1350	105; 150	10°, 20°, 30°

- Pulleys (return and drive).
- Wheels Z46.
- Breaks for PTG.
- Clutches.
- Gall chains.
- Drum rubber coatings.





CONVEYOR ROLLERS MANUFACTURER

ul. Karola Miarki 11
44-189 Wilcza
Poland
tel/fax: +48 (32) 239 74 78
tel: +48 (32) 422 57 98

biuro@jdj-polska.eu
www.jdj-polska.eu